



## At Tierra Vista Village !!!

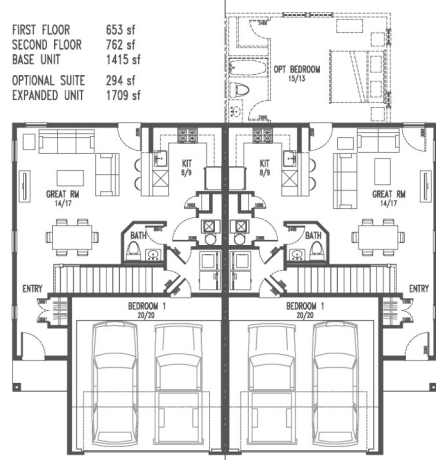
**Price Based on Household Income**

**Call RHA for Qualifying and Information**

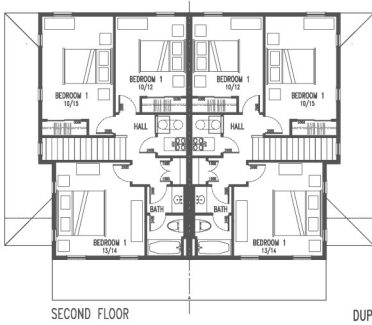


- Every Artistic Home Features:**
- LEED Certified
  - Energy Star Certified
  - HERS Index of 0-57
  - Averages 40% more energy efficient than a "code" build home
  - Includes Air Conditioning
  - Whole house HEPA filtration system.
  - Includes Landscaping
  - 2 yr system/10 year structural warranty from 2/10 home buyer warranty, Inc.

**1415 Sq. Ft.**



DUPLEX DESIGN REVIEW  
3 September 2009



© STEVEN BACZEK ARCHITECT 2009

DUPLEX DESIGN REVIEW  
3 September 2009

\*\* Price is based on Standard Fixture & Finishes on a Standard Lot \*\*

**DIRECTIONS TO TIERRA VISTA VILLAGE MODEL HOME/SALES OFFICE:**

From College Drive (or 6th Avenue) continue East like you would head up to Fort Lewis College. Go through the Round-A-Bout and continue on Goeglein Gulch Road .7 mile. Turn Left on Rim Drive, Right on Tierra Vista Drive  
**Address: 219 Tierra Vista Drive**



**1415 Sq. Ft.**

**BUILDING GREEN**

Thanks to advanced design, engineering and construction techniques, Artistic Homes has added a home heating and cooling cost guarantee.

Artistic Homes guarantees an air tight construction on all their homes. The heating ducts are located in conditioned space to allow for an un-interrupted blanket of insulation in the attic. Every home is sized, sealed and insulated and leak tested. With a room to room pressure balanced system, Artistic Homes guarantees no more than 3 degrees temperature difference in living to provide maximum comfort.

**JUST SOME OF THE MANY DETAILS:**

- Bedrooms: 3
- Bathrooms: 1.5
- Heat: Forced Air 95% Eff. Gas Furnace
- Cooling: Refrigerated Air
- Air Quality: Whole House High Efficiency Air Filtration System with Room Pressure Balanced System
- Windows: ANDERSON Energy Star Rated Low E with Argon Gas Blend
- Insulation: GREEN GUARD R50 in Ceiling, R21 in Walls

**AVAILABLE OPTIONAL PACKAGES:**

Plumbing, Appliances, Lighting, Flooring, Accent Walls, Solar Packages, Exterior stone, Shingles and Stucco Color.

**AVAILABLE ON LOT: 9A/9B**

**CALL OR STOP BY TODAY**

**TO LEARN MORE ABOUT THESE HIGH PERFORMANCE, AWARD WINNING 100% LEED-H HOMES**



**JULEE GLYNN  
(970) 749-8587**